



HM Government

Get help to juggle work and life

Government support for childcare costs for working parents



**15 hours
childcare for
children aged
from 9 months
starting in
September**



Childcare
Choices

Government childcare support

From September 2024, eligible working parents in England with children aged 9 months and older will be able to get 15 hours childcare per week.

This means you could access 15 hours childcare over 38 weeks a year for children from 9 months until they turn 3 years of age.

Don't forget the existing offers for 3 and 4 year olds, helping even more families to save money on their childcare costs.

You may be able to get this expanded 15 hours childcare if:

- ✓ You have a child aged between 9 months and 3 years of age.
- ✓ You live in England.
- ✓ You and your partner (if you have one) each earn at least the equivalent of 16 hours a week at the National Minimum Wage or Living Wage on average, but no more than £100,000 per year.

How to get your code

1

Visit the Childcare Choices website.

Check your eligibility online.

2

Speak to your provider.

Check that they can offer your child a place and check what their arrangements are.

3

Apply for your code online.

You will find the link on the Childcare Choices website. You'll need your National Insurance number (or unique taxpayer reference if you are self-employed), the date you started or are due to start work, details of any government support or benefits you receive, and the UK birth certificate reference number (if you have one) for your child.

4

Give your code to your provider.

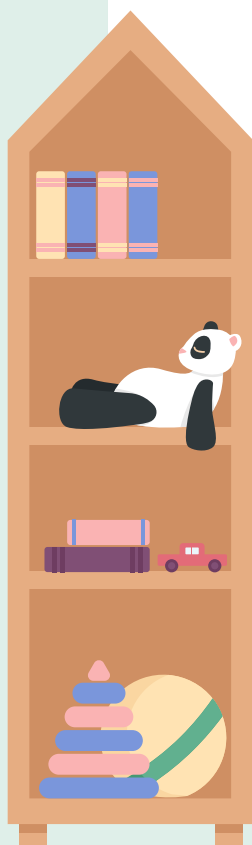
You may find out if you're eligible straight away, but it can take up to 7 days for your code to come through.

5

Reconfirm your details on your Childcare Account every 3 months.



Scan for more information



Using your childcare hours

Here are some things to consider when using government funded childcare support. Remember it's always a good idea to speak to your provider about their arrangements.

You could get **up to 15 hours of childcare per week over 38 weeks.**

This works out at 570 hours per year.

Some providers will allow you to 'stretch' your hours over more than 38 weeks, using fewer hours per week.

You can claim your hours **the term after your child reaches the relevant age** and you meet the eligibility criteria. These terms begin on 1 January, 1 April and 1 September.

You can use your hours **alongside other childcare schemes** such as **Tax-Free Childcare** or **Universal Credit Childcare**, and you can use your hours flexibly with a range of childcare providers. These include nurseries, childminders, pre-schools and playgroups.

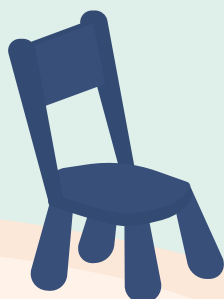
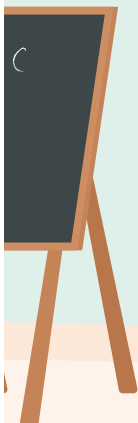
Remember, your childcare hours **don't cover additional hours, activities, or extra costs** such as meals. Speak to your provider about any additional charges on top of the funded childcare hours, including any alternative options they offer.

If **you already use 15 hours** for your **2 year old** and they then turn 3, you can **reconfirm as normal**, and the code will be valid for the **30 hours offer**.

Some providers will have **different arrangements for when you can use your childcare hours**. Speak to your provider about whether the hours they offer are convenient for you.

To continue getting your childcare hours you need to **confirm your details** are up to date **every 3 months**. You should get a reminder when you need to do this.

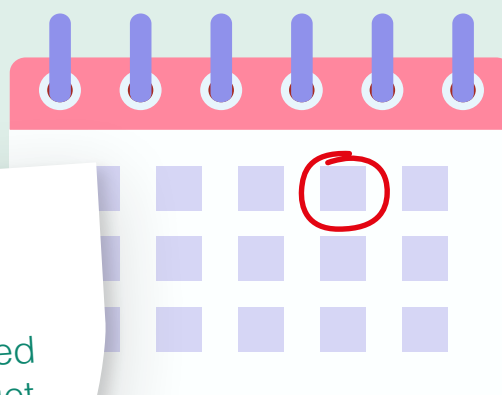
If you're on **parental leave** and you plan to return to work by the end of September 2024 – or you're starting a new job – you can **also now apply for your childcare code**. Visit the website for more information.



Important dates to remember

31 August

Deadline for eligible parents of children aged from 9 months old to get their codes.



1 September

15 hours for children aged 9 months old and over becomes available.



There is a range of other government support to help working families with the cost of childcare, including Tax-Free Childcare and Universal Credit Childcare.

Visit childcarechoices.gov.uk or search **'Childcare Choices'** to find out more and see what help you can get.

If you have difficulties finding childcare that suits you and your child, please contact your local authority's Family Information Service.

Childcare
Choices